



MARBLE

The Free Software Geobrowser

Marble – a virtual globe ...

Marble is a virtual globe and world atlas that you can use to learn more about Earth: You can pan and zoom around and you can look up places and streets.

A mouse click on a place label will provide a matching Wikipedia article. Of course Marble can do even more for you: You can measure distances between locations or watch the current weather and the real-time cloud cover.

... and a polished jewel

Marble offers different thematic maps: A classroom-style topographic map, a satellite view, street map, earth at night and temperature and precipitation maps. All maps include a custom map key, so it can also be used as an educational tool for use in classrooms. For educational purposes you can also change date and time and watch how the starry sky and the twilight zone change on the map.

In opposite to other virtual globes Marble also features multiple projections: Choose between a Flat Map ("Plate carrée"), Mercator or the Globe.

The best of all: Marble is Free Software / Open Source Software and promotes the usage of free maps. And it's available for all major operating systems (Linux/Unix, MS Windows and Mac OS X).

For software developers the full feature set of Marble is available as a library for use in other applications.



Website: <http://www.marble-globe.org>

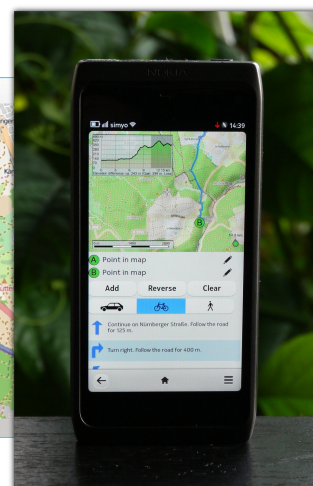
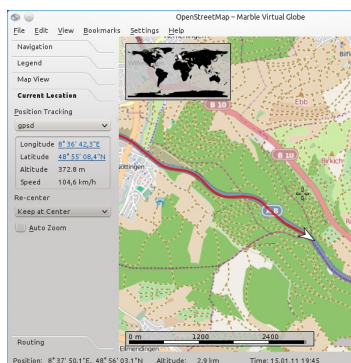
License: GNU LGPL 2+ (Open Source)

Version: 1.3 , January 25, 2012

OS: Linux, Windows, Mac OS X, MeeGo
Qt / C++

New features in Marble 1.2 / 1.3

- Marble Touch – Qt Quick version for mobile use
- Basic OSM Vector rendering
- Global Online/Offline Routing and Search
- Voice Navigation with speaker files
- Improved Map Creation Wizard
- Better GPS/GPX support
- Elevation Profiles
- Satellite Orbits



Marble is part of the KDE Education Project: <http://edu.kde.org>



MARBLE

Find Your Way and Explore the World

Features

Easy to Use

Intuitive map navigation allows for panning and zooming. Map data is automatically being downloaded in the background and cached on the hard disc.

Standard Map Themes

Atlas, Satellite, OpenStreetMap, Plain Map, Earth at Night, Historical Map, Moon Map and more.

Map Data (Tile Server Layouts)

Multiple layers of data can be specified and blended via filters. Marble also provides a map creation wizard for users. Supported tile layout schemes include:

- **OpenStreetMap**
- Google Maps, Ovi Maps
- **WMS support**
- Custom Server Layouts (specified via XML)

Projections

Globe, Equirectangular, Mercator

Supported File Formats

- KML / Google Earth(TM) user data, no KMZ
- GPX, OSM, more formats via plugins

Position Providers

GPS (via gpsd, Qt Mobility, GeoClue, Maemo 5)

Routing

The user interface allows for entering routes via drag and drop. The technical specs include:

- **Global Online Routing**, Yours, OpenRouteService
- **Offline Routing**: Monav, Routino, Gosmore
- Plugin based routing backends
- **Turn-By-Turn Navigation, Voice Navigation**
- Profiles (fastest/shortest Car, Bicycle, Pedestrian)
- Via points and alternative route suggestions
- **Elevation profiles**

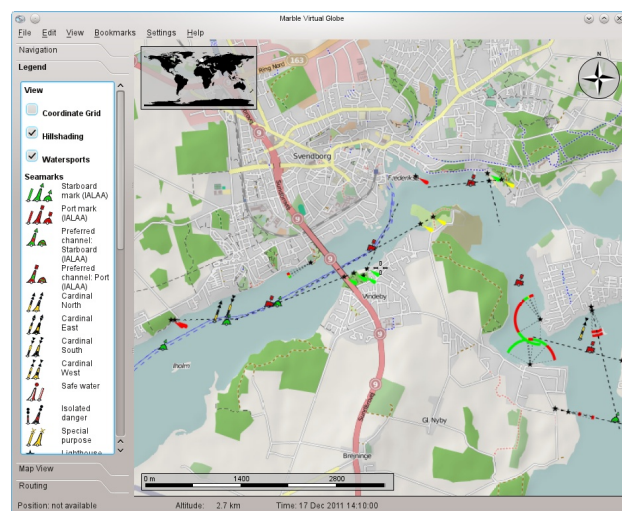
Wikipedia Integration

And more ...

Software developers can extend Marble via plugins or they can embed it into their own applications. Community and commercial support available.



A KML file displaying the US states in Marble



OpenSeaMap with multiple layers



Marble running on a Nokia N900 in a car

<http://www.marble-globe.org>



Marble is part of the KDE Education Project: <http://edu.kde.org>

